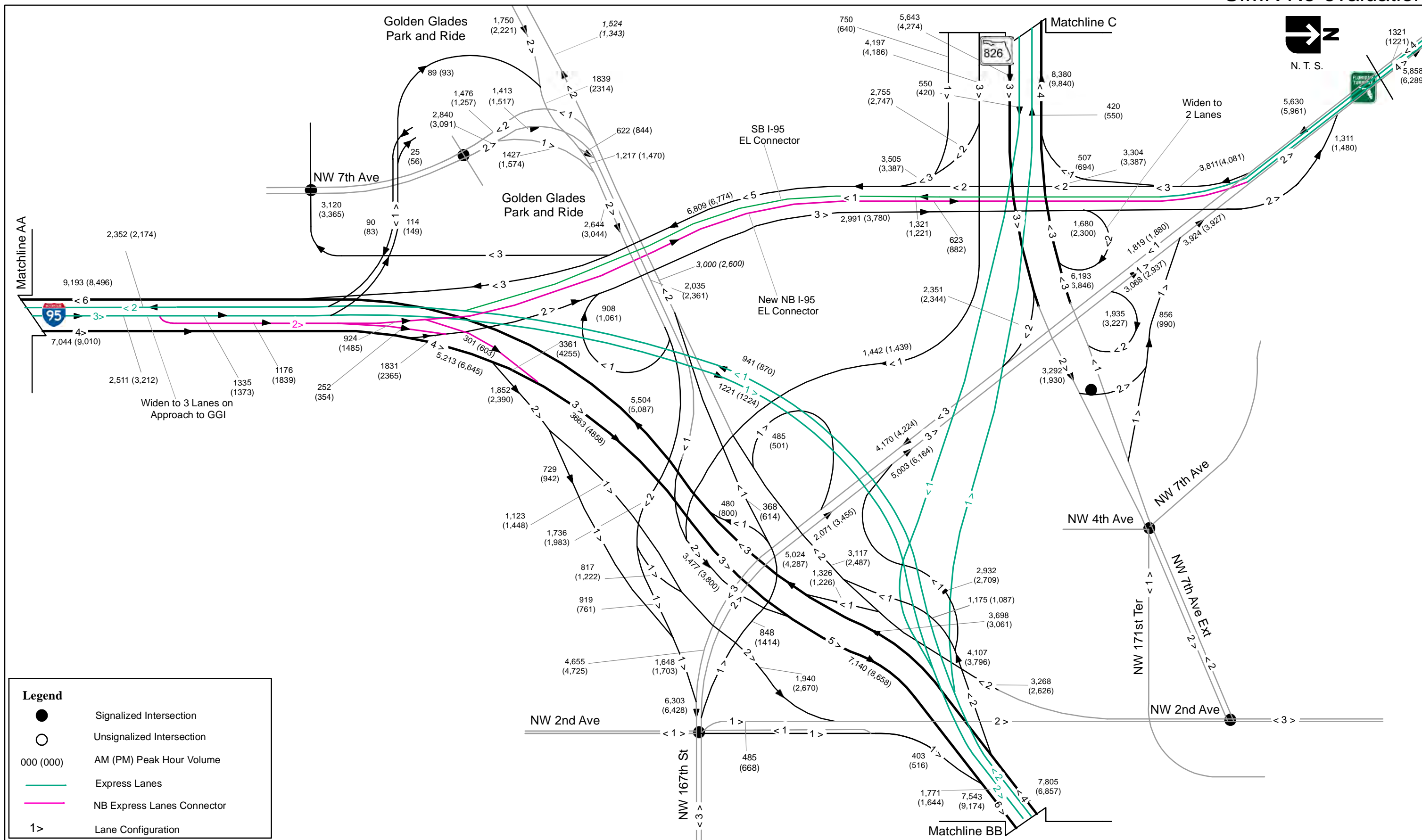


Widen to 3 Lanes on Approach to NB GGI





Legend

- Signalized Intersection
- Unsignalized Intersection
- 000 (000) AM (PM) Peak Hour Volume
- Express Lanes
- NB Express Lanes Connector
- 1 > Lane Configuration

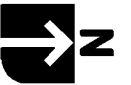


SR 826/Palmetto Expressway PD&E Study
From SR 93/I-75 to Golden Glades Interchange

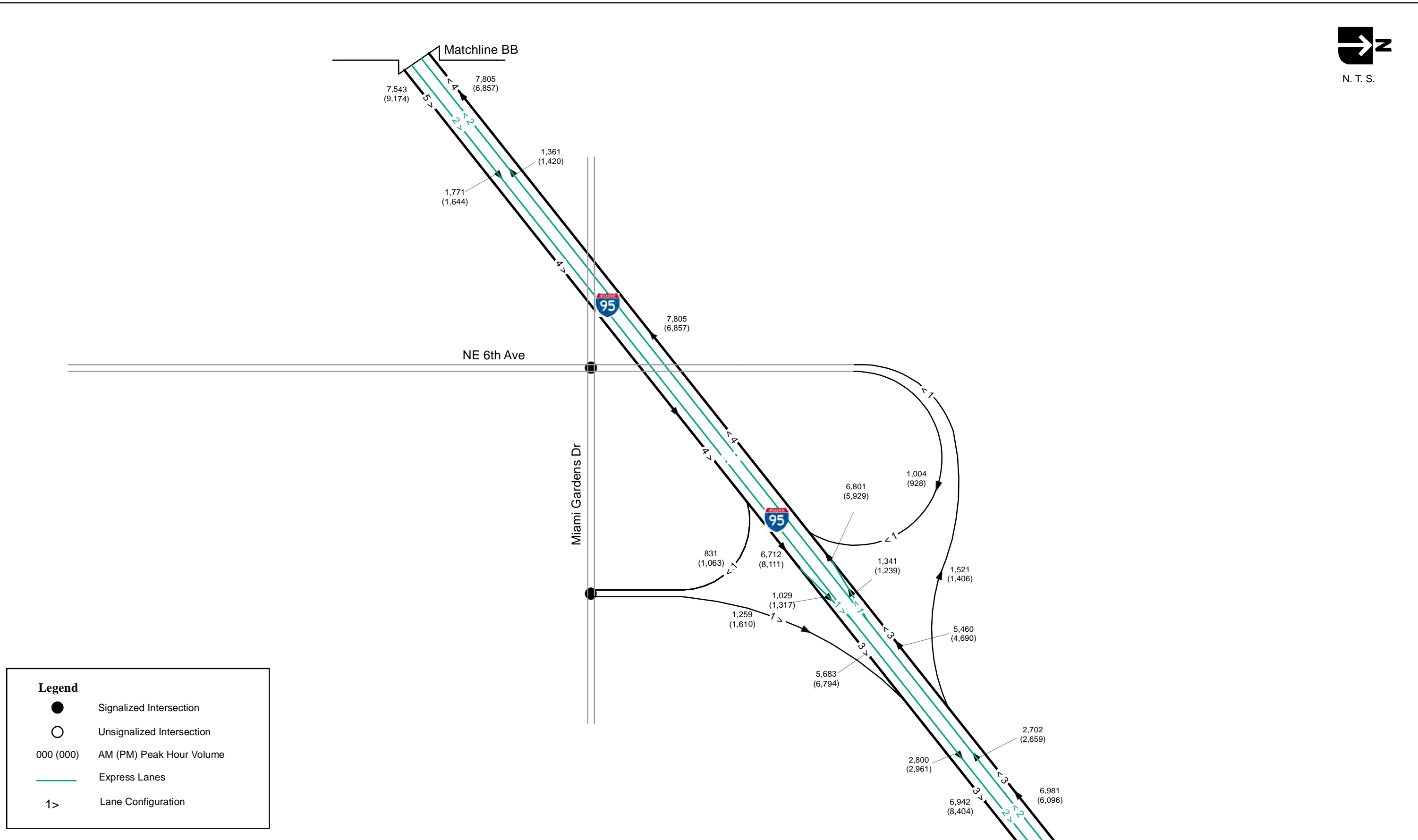
ETDMNO:11241
FM.:418423-1-22-01

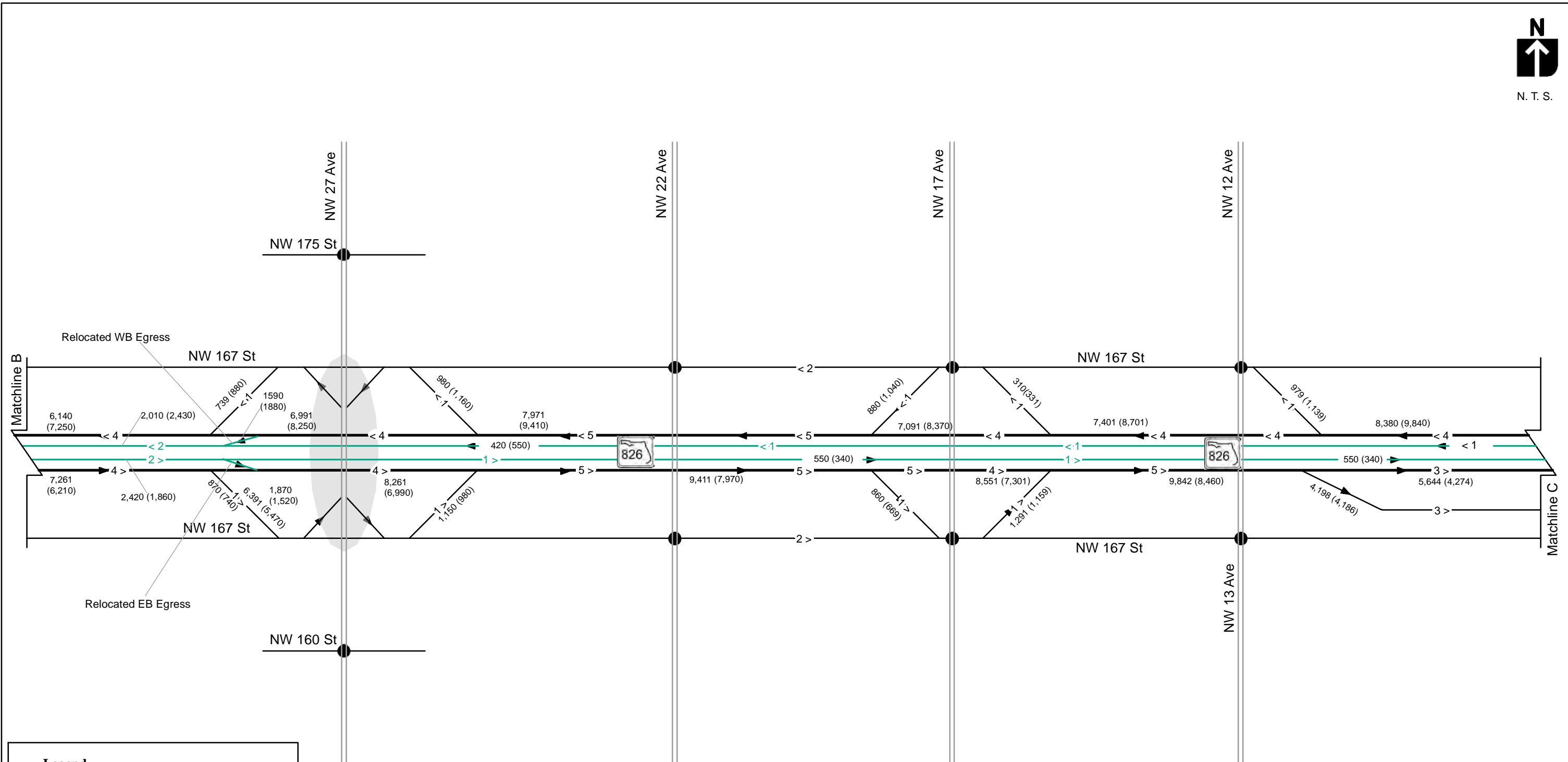
2018 SIMR Re-evaluation Design Concept
Line Diagram

Figure 3-3
Sheet 2 of 4



N. T. S.

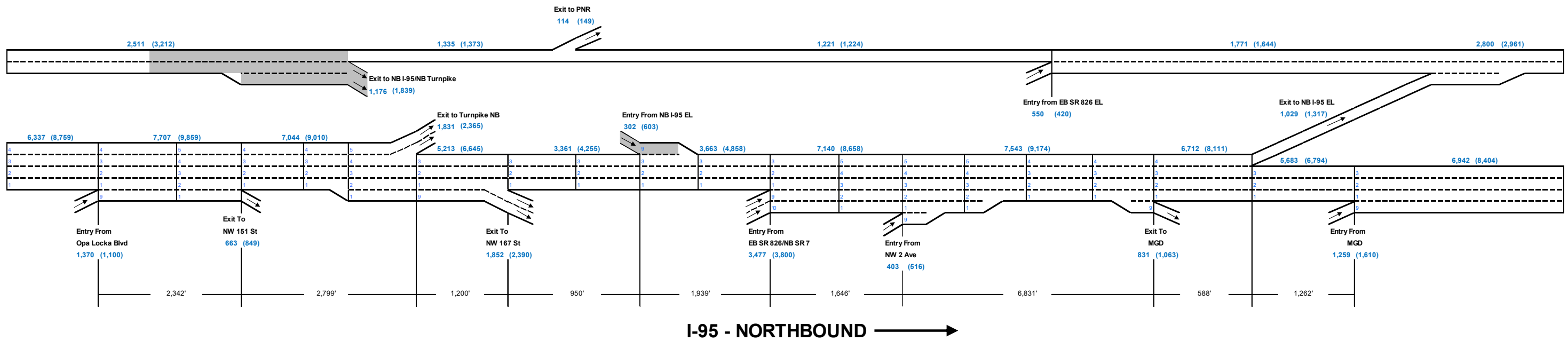




Legend

- Signalized Intersection
- Unsignalized Intersection
- 000 (000) AM (PM) Peak Hour Volume
- Express Lanes
- 1> Lane Configuration





Legend :
 X,XXX (X,XXX) 2040 AM (PM) Peak Hour Volume
 [Grey Box] Design Change

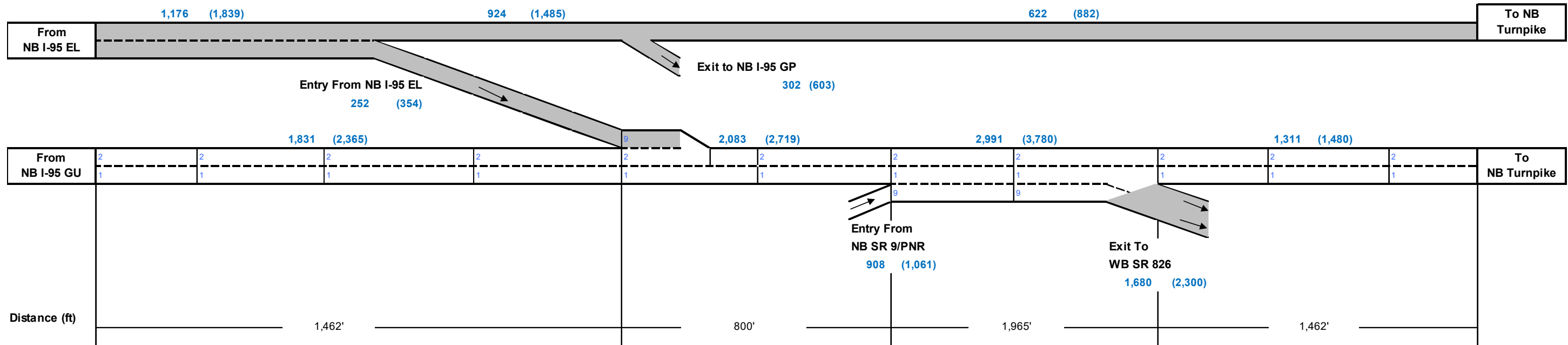


RS&H, Inc
 6303 Blue Lagoon Drive, Suite 325
 Miami, Florida 33126

SR 826/Palmetto Expressway PD&E Study
 From SR 93/I-75 to Golden Glades Interchange
 ETDM NO: 11241
 FM: 418423-1-22-01

2018 SIMR Re-evaluation Design Concept
 Lane Schematic

Figure 3-4
 Sheet 1 of 3

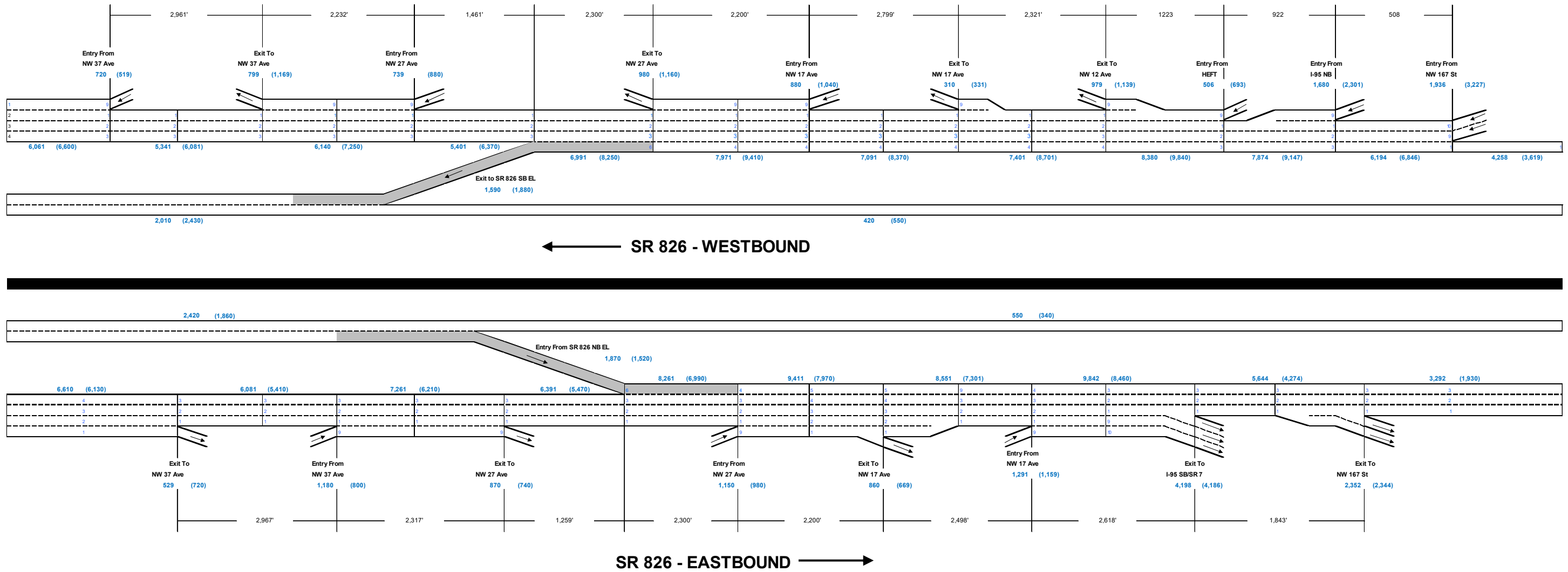


→
NB I-95 to NB TURNPIKE RAMP CONNECTORS

Legend :

X,XXX (X,XXX) 2040 AM (PM) Peak Hour Volume

Design Change



Legend :
 X,XXX (X,XXX) 2040 AM (PM) Peak Hour Volume
 [Shaded Box] Design Change



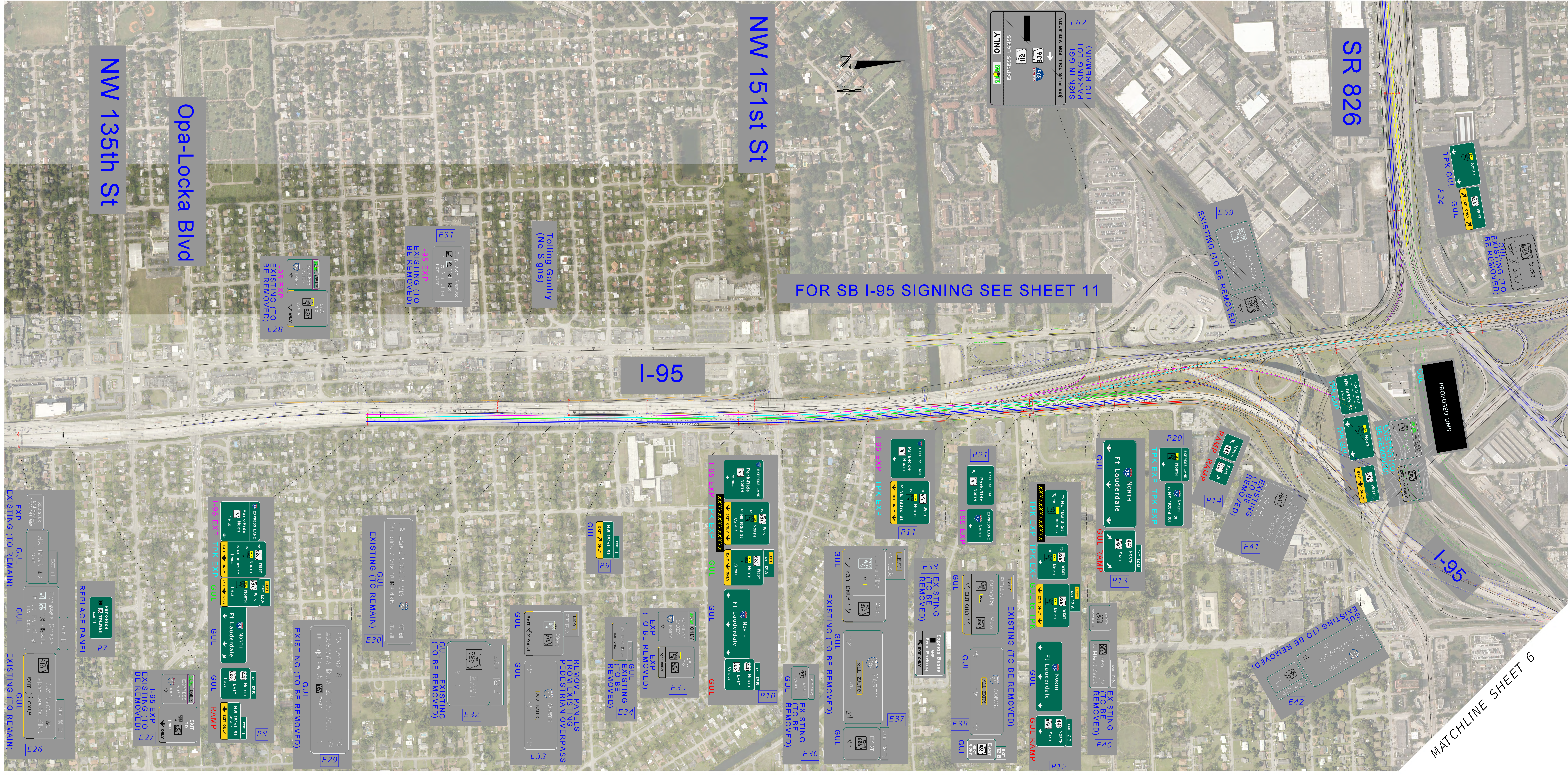
RS&H, Inc
 6303 Blue Lagoon Drive, Suite 325
 Miami, Florida 33126

SR 826/Palmetto Expressway PD&E Study
 From SR 93/I-75 to Golden Glades Interchange
 ETDM NO: 11241
 FM: 418423-1-22-01

2018 SIMR Re-evaluation Design Concept
 Lane Schematic

Figure 3-4
 Sheet 3 of 3

MATCHLINE SHEET 3



MATCHLINE SHEET 6

MATCHLINE SHEET 7

SR 826 - SEE SHEET 5